



After Sales Support  
Call 0871 911 7031  
Email  
[customerservice@gardengearonline.co.uk](mailto:customerservice@gardengearonline.co.uk)  
Product Code G1005

Thank you for purchasing this product, which has been made to demanding high quality standards and is guaranteed for domestic use against manufacturing faults for a period of 12 months from date of purchase

**For correct usage, please read these instructions carefully before first use and store in a safe place for future reference.**



## INTRODUCTION

### Congratulations

You have made an excellent choice with the purchase of this quality Garden Gear product.

By doing so you now have the assurance and peace of mind which comes from purchasing a product that has been manufactured to the highest standards, performance and safety.

We want you to be completely satisfied with your purchase, so this Garden Gear product is backed by our full 12 month manufacturers guarantee and an outstanding after sales service through our dedicated Helpline.

Register your product for an extended 2-year warranty by visiting our website [www.gardengearonline.co.uk](http://www.gardengearonline.co.uk). The product must be registered, along with your contact information, within 30 days of purchase. For full terms and conditions please visit our website.

We hope you enjoy using your purchase for many years to come.

### **Safety information and general warnings**

- Remove all packaging and make sure that the product is intact. Do not leave packaging materials like bags and staples within the reach of children and pets.
- This appliance is approved solely for use in accordance with the description and safety instructions specified in this user manual.
- Read through these instructions fully before using the product.
- Wear appropriate personal protective clothing during use, including ear defenders, safety glasses and gloves.
- Wear solid, closed in shoes with a good grip when using the trimming shears.
- Do not use if any parts are damaged, always consult a qualified repair person.
- Do not use in wet weather, wet areas or in areas where gases or other flammable materials are stored.
- Not suitable for use in frozen or snowy conditions.
- Keep children and pets well away from the working area.
- Tie long hair back and remove any loose jewellery before use.
- Only use the shears in a well-lit area.
- When not in use store in a cool dry area and out of reach of children.
- Keep the shears in good clean condition.
- Do not use the shears if you are tired or under the influence of drugs or alcohol.
- If the shears strike a foreign object, turn it off immediately and check for damage.
- If the shears start to vibrate abnormally, turn it off immediately and check for the cause.
- Wear gloves and use caution when cleaning or performing maintenance on the shears.
- Do not put hands, feet or any body part or clothing near the blades
- The product is not intended for use by persons (including children) with reduced physical, sensory or mental capabilities, or lack of experience and knowledge, unless they have been given supervision or instruction concerning use of the product by a person responsible for their safety.
- Do not attempt to modify the product or use accessories. Any such modification or misuse could result in a hazardous condition leading to serious injury.
- If any parts are damaged or missing, do not operate until the parts are replaced.
- Always carry the shears by the handle.

- Do not over reach. Always keep a firm footing and maintain balance during operation, always distribute the weight evenly on your body and reduce the possibility of strain.
- Do not use the tool if the switch fails to turn it on and off. Any machine that cannot be controlled with its switch is potentially dangerous and must be checked by a qualified electrician and repaired if necessary.
- Recharge the battery only with the charger provided. A charger that is suitable for one type of battery may create risk of fire when used with another battery.
- The supplied battery charger is only suitable for charging the shears, and to prevent the risk of fire and explosion must not be used for charging any other product.
- Before each use, check the battery charger, cable and plug for signs of damage. If the battery charger is damaged, do not use it or try to repair it, instead take it to your local qualified specialist.
- Make sure the power rating on the charger plug matches the outlet.
- Never modify the charger plug in any way.
- Do not use any adaptor plugs with earthed (grounded) power tools. Unmodified plugs and matching outlets will reduce the risk of electric shock.
- Never use the power cable for carrying, pulling or unplugging the charger.
- Never expose the battery charger or plug to damp or wet environments.
- When you are not using the shears charger store in a safe dry place.
- Never leave a battery unattended when charging.
- Not suitable for commercial purposes.

## Safety symbols and explanations



Read the instruction manual completely before using the power tool.



The product should not be disposed of with other household waste. Follow the disposal instructions within this manual.



Warning! This symbol is displayed on the appliance to remind you of the safety precautions you should take when operating the machine.



Warning! Keep all persons, especially children and animals, at a safe distance of at least 15 metres when operating.



The manufacturer confirms that this power tool is in accordance with applicable European directives.



Do not expose to rain.



Wear protective equipment such as safety glasses and gloves.



Keep hands and feet away from all blades.



Wear solid, closed shoes with a good grip.



Sound level indicated by LwA in dB.



Beware of feet near blades.



Beware of flying objects



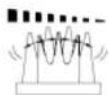
Remove the charger plug from the mains immediately if the cable is damaged.



3.6 Volt Lithium-Ion battery



Only use the battery charger indoors



Beware of moving blades

## Electrical Safety

### Battery use and care

- Make sure the power rating on the charger plug matches the outlet.
- Never modify the charger plug in any way.
- Do not use any adaptor plugs with earthed (grounded) power tools. Unmodified plugs and matching outlets will reduce the risk of electric shock.
- Never use the power cable for carrying, pulling or unplugging the charger.
- Never expose the battery charger or plug to damp or wet environments.
- When you are not using the shears charger store in a safe dry place.
- Never leave a battery unattended when charging.

Your battery should be fully charged when you receive your shears, but you should always follow the charging procedure.

### Charging the battery

Check that your mains voltage is the same as that marked on the rating plate of the battery charger.

Connect the charger to the charging socket (9) at the rear of the handle grip (7) see image below.

Plug the battery charger in a power socket. The red LED will come on to indicate that charging is underway.

A low battery pack requires a maximum charging period 3.5 hours. The temperature of the battery may rise slightly during the charging operation. This is normal.

As soon as battery fully charged, the red LED will turn off.

If the LED light does not come on or the battery fails to charge, check whether there is voltage at the socket.

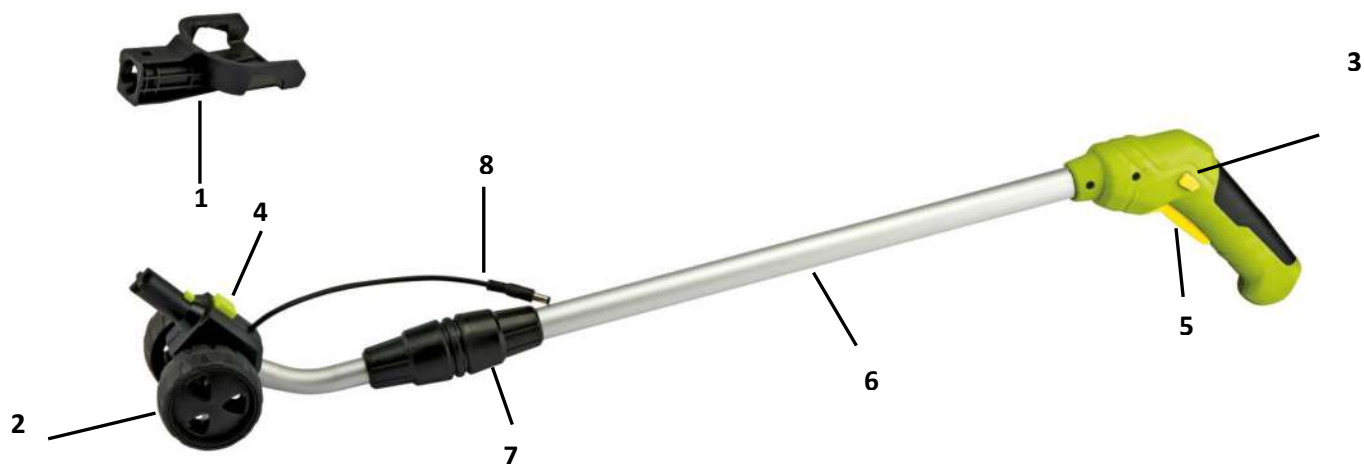
Regular recharging of the battery is advised to maintain full power of the shears. Recharging is necessary when you notice a drop in the tool's performance.

Never allow the battery to become fully discharged, as this will shorten the battery's life.

## Description of parts

### Telescopic handle

- |                         |                       |
|-------------------------|-----------------------|
| 1. Mount                | 5. On switch          |
| 2. Wheels               | 6. Extending shaft    |
| 3. Safety lock          | 7. Extension coupling |
| 4. Mount release button | 8. Power connector    |



### Shrub and grass shears

- |                         |  |
|-------------------------|--|
| 1. Grass cutter blade   | 6. Blade guard                             |
| 2. Blade release button | 7. Handle grip.                            |
| 3. Safety lock-off      | 8. Battery charger                         |
| 4. ON button            | 9. Charging socket, charge indicator light |
| 5. Shrub cutter blade   |  |



## Assembly

### Fitting and removing the mount for the telescopic handle

Holding the hand grip on your shears with one hand, and the mount for the telescopic handle with the other, push firmly in the direction of the arrow as shown below. The mount will lock into place. To remove reverse the action by pulling firmly in the opposite direction.



### Fitting the telescopic handle and wheels

Push wheels (2) onto the spindle pressing firmly right until they stop as shown below.



Connect the telescopic handle to the shears by inserting as shown below, it will click into place. To remove the telescopic handles press the green mount release button.



Connect the power connector on the telescopic handle into the charging point on the rear of the handle grip, location shown below.





### Using the extension and rotation feature on the telescopic handle.

Extend or shorten the length of the telescopic handle by loosening the extension coupling and pull in or push out the lower section to achieve the correct height as shown below. Then tighten the coupling.



### Rotating to use the edge trimmer

The grass trimmer can be used in 2 positions - flat for cutting up to lawn edges and rotated 90° to cut the edge sides creating a neat finish. To cut sides, hold the handle, grip and press the release button then turn the shears 90° and relocate in one of the square locations on the side, (either left or right).



Release button

### Removing a fitted blade



**Wear gloves when handling sharp blades**

To remove the fitted blades, hold the handle with one hand and press the blade release (2) button; this will release the blade, with your other hand pull the blade downwards so that the blade will come away from the shears with its black plastic housing attached. Holding the blade with one hand, and the

housing with the other, pull the housing away from the blade. To fit the other blade, reverse the actions taken.

Make sure that the blades moving parts are replaced as shown in following images.

### Fitting a blade

To fit a new blade, take the housing off the blade you have removed and re-fit to the blade to be fitted. Reposition the housing and blade to the shears and push it into its location. You will hear a click when it has locked into position, check by applying downward pressure.

### Releasing and re-fitting the blade and locating the blade

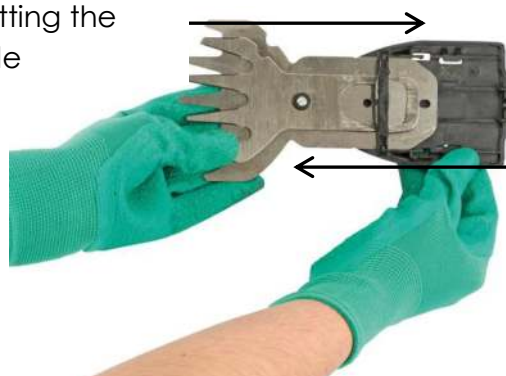


### Removing



### Removing and re-fitting a blade to the housing

Re-fitting the blade



Removing the blade

## Fitting the blade guard



## Blades with the blade housing fitted

The blades shown below ready to be refitted to your shears note the moving parts face outwards



## Shrub blade fitted



## Using the grass shears

Press the safety lock switch and depress the on switch, the shears will start. Practice with the shears flat at first with small areas until you are comfortable and more confident then move to larger areas and try the edging setting. Work in straight rows keeping the head of the shears at the correct height and not pointing down into the earth. Do not attempt to cut high sections at one go, but take the top section off then move lower gradually as required.

**Note:** Releasing the on switch automatically re-engages the safety lock switch.

**Note:** The telescopic handle is only designed for use with the short grass cutting blade. Do not use with the hedge cutting blade attached.

## Using the hedge trimmer

Press the safety lock switch and depress the on switch, the trimmer will start. Practice with the shears flat at first with small areas until you are comfortable and more confident then move to larger areas and use back and forth sweeping movements cutting small amounts.

Work in straight rows keeping the head of the trimmer at the correct height and not pointing down into the bush or hedge. Do not attempt to cut all at one go, but take the top section off then move lower gradually as required. Then cut the sides sweeping upwards. If necessary, use a length of string as a guide to obtain straight edges.

**Note:** Releasing the on switch automatically re-engages the safety lock switch.

**Note:** The telescopic handle is only designed for use with the short grass cutting blade. Do not use with the hedge cutting blade attached.

### Care and maintenance

Before each use check the trimming shears for any obvious defects such as loose, worn or damaged parts.

Do not use the trimming shears if there is any sign of damage.

Check the outer sections of the body for any damage and if present get a qualified person to replace.

Carry out the following maintenance and cleaning work regularly:

- Every time you use the trimming shears clean all parts especially the blades. Remove any moisture, debris or dust and store in a clean dry environment.
- Do not use or submerge the trimming shears in water or use cleaning agents or solvents, these may damage the trimming shears.
- Do not try to service the trimming shears yourself, always take it to a qualified repair person.
- We recommend using a small amount of lubricating oil, periodically, to keep your blades in a good condition.

### Li-Ion battery care & maintenance

Lithium-Ion rechargeable batteries require routine maintenance and care in their use and handling. Read and follow the guidelines to safely use Lithium-Ion batteries and achieve the maximum battery life span.

- Do not leave batteries unused for extended periods of time, either in the machine or in storage. When a battery has been unused for 3 months or more, check the charge status and charge or dispose of the battery as appropriate.
- The typical estimated life of a Lithium-Ion battery is about two years or 300 charge cycles, whichever occurs first. One charge cycle is a period of use from fully charged, to fully discharged, and fully recharged again.

- Rechargeable Lithium-Ion batteries have a limited life and will gradually lose their capacity to hold a charge. This loss of capacity (aging) is irreversible. As the battery loses capacity, the length of time it will power the product (run time) decreases.
- Lithium-Ion batteries continue to slowly discharge (self-discharge) when not in use or while in storage. Routinely check the battery's charge status.
- Carefully monitor batteries that are approaching the end of their estimated life.
- Consider replacing the battery with a new one if you note either of the following conditions:
  - The battery run time drops below about 60% of the original run time.
  - The battery charge time increases significantly.
- If a battery is stored or otherwise unused for an extended period, follow the storage instructions. If damaged, do not attempt to recharge it or to use it. Replace it with a new battery.

### Storage

- Charge or discharge the battery to approximately 50% of capacity before storage.
- Charge the battery to approximately 50% of capacity at least once every six months.
- Remove the battery and store it separately from the product.
- Store the battery at temperatures between 5°C and 20°C (41°F and 68°F).

**Please note:** Higher temperatures (above 20°C or 68°F) reduce the battery storage life.

**Technical specifications**

Speed : .....	1300 rpm
Cutting width of the grass cutter: .....	90 mm
Cutting width of the shrub shears .....	135 mm
Cutting thickness of the shrub shears .....	8 mm
Running time max.: .....	85 min
Battery pack: .....	Li-Ion / 7.2 V d. c. / 1.3 Ah
Charging time: .....	3-5 h
Protection class: .....	III
L <sub>pA</sub> sound pressure level: .....	66 dB
L <sub>WA</sub> sound power level: .....	86 dB
K uncertainty .....	3 dB
Vibration a <sub>hV</sub> : .....	3.4 m/s <sup>2</sup>
K uncertainty .....	1,5 m/s <sup>2</sup>
Weight: .....	1.0 kg

**Battery charger**

Mains voltage.....	230-240 VAC ~ 50-60 Hz
Output	
Rated voltage .....	9 V DC
Rated current: .....	400 mA

## Declaration of Conformity

### In accordance with EN ISO 17050-1:2010

We Branded Garden Products Ltd  
of Poplar Lane, Ipswich, Suffolk, IP8 3BU

in accordance to the following Directives:

2014/35/EU	Low Voltage Directive
2014/30/EU	The Electromagnetic Compatibility Directive
2006/42/EC	The Machinery Directive
2000/14/EC	The Noise Emission in the Environment by Equipment for Use Outdoors Directive
2015/863/EU & Amending Annex II 2011/65/EU	Restriction of Hazardous Substances Directive
2012/19	Waste Electrical and Electronic Equipment Directive
94/62/EC	Packaging and Waste
850/2004/EC Amended by EU No. 757/2010 & EU 756/2010	Persistent Organic Pollutants

hereby declare that:

Equipment	7.2V Trimming Shears
Model number	G1005 / M1E-7.2LD-135M/E (Shears) & BHY35090400BSB1 (Charger)

is in conformity with the applicable requirements of the following documents

Ref. No.

**Shears:** EN 60335-1:2012+A2:2019, IEC 60335-1:2010; EN 60745-1+A11:2010, EN 60745-2-15+A1:2010, EN 62233:2008, IEC 60335-2-94:2008; EN 55014-1:2017; EN 55014-2:2015; IEC 61000-4-2:2008, EN 50636-2-97:2014

**Charger:** BS EN 60335-2-29:2004+A2:2010; BS EN 60335-1:2012; EN 62233:2008; EN 55014-1:2017; EN 55014-2:2015; EN 61000-3-2:2006+A2:2009; EN 61000-3-3:2008; IEC 62321:2008

Noise measurements have been made in accordance with EN ISO 11680-1 with internal control of production (Schedule 8 / Annex V). The declared noise values are as follows:

Measured sound power level	Guaranteed sound power level
66 dB Lwa	86 dB Lwa

I hereby declare that the equipment named above has been designed to comply with the relevant sections of the above referenced specifications and is in accordance with the requirements of the Directives.

Signed by:



Mr Dan Price  
Managing Director

Branded Garden Products Ltd December 2020

The technical documentation for the product is available from:

Branded Garden Products Ltd, Poplar Lane, Ipswich, Suffolk, IP8 3BU



**GUARANTEE  
IMPORTANT**

**Please do not return this product without first calling the Customer Service number below:  
0871 911 7031\***

Thank you for purchasing this product, which has been made to demanding high quality standards and is guaranteed for domestic use against manufacturing faults for a period of 12 months from the date of purchase.

Register your product for an extended 2-year warranty by visiting our website [www.gardengearonline.co.uk](http://www.gardengearonline.co.uk). The product must be registered, along with your contact information, within 30 days of purchase. For full terms and conditions please visit our website.

This guarantee does not affect your statutory rights. If your product fails due to a defect in material or workmanship during this period, please return it to the place of purchase. Normal wear and tear is not covered under the guarantee.

Any guarantee is invalid if the product has been misused or subject to neglect or an attempted repair other than by our own service centre.

Due to continuous product improvement, we reserve the right to change the product specification without prior notice.

**After Sales Customer Service:**

Customer Service Department, Branded Garden Products Ltd, Premier House, Hortonwood 7, Telford, TF1 7GP, UK

Telephone: 0871 911 7031\*

E-mail [customerservice@gardengearonline.co.uk](mailto:customerservice@gardengearonline.co.uk)

Please retain for future reference.

Colours and contents may vary.

Waste electrical products should not be disposed of with household waste. Please recycle where facilities exist. Check with your Local Authority or retailer for recycling advice.

**Please note that all products with the symbol below must be recycled.**



\* Calls cost 13p per minute, plus your phone company's access charge